

AMH Antibody

Subcategory: Rabbit Polyclonal Antibody

Cat. No.: 252044

Unit: 0.1 mg

Description:

Muellerian-inhibiting factor (AMH) is a glycoprotein produced by the Sertoli cells of the testis. AMH causes regression of the Muellerian duct. AMH is also able to inhibit the growth of tumors derived from tissues of Muellerian duct origin. Defects in AMH are the cause of persistent Muellerian duct syndrome type 1 (PMDS1). PMDS1 is a form of male pseudohermaphroditism characterized by a failure of Muellerian duct regression in otherwise normal males.

Isotype: Rabbit Ig

Applications: E, IHC, WB

Species Reactivity: H

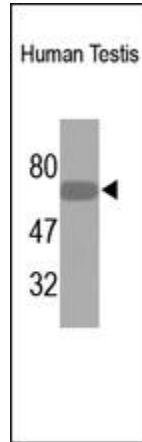
Format: Each vial contains 0.1 mg IgG in 0.1 ml (1 mg/ml) of PBS pH7.4, 2% BSA with 0.09% sodium azide. Antibody was purified by Protein-G affinity chromatography.

Alternate Names: Muellerian-inhibiting factor; Anti-Muellerian hormone; AMH; Muellerian-inhibiting substance; MIS; AMH; MIF

Accession No.: P03971

Antigen: KLH-conjugated synthetic peptide encompassing a sequence within the C-term region of human AMH.

Application Notes: E: 1:10,000-1:40,000; WB: 1:100-1:1,000; IHC: 1:100-1:500



The AMH Antibody (Cat. No. 252044) is used in Western blot to detect AMH in human fetal testis lysates.

Storage: Store at -20°C. Minimize freeze-thaw cycles. Product is guaranteed one year from the date of shipment.

For research use only, not for diagnostic or therapeutic procedures.