

VCAM-1 Antibody

Subcategory: Rabbit Polyclonal Antibody

Cat. No.: 250906

Unit: 0.1 mg

Description:

Vascular cell adhesion molecule 1 (VCAM-1) is a member of the Ig superfamily that plays an important role in cell-cell recognition. VCAM-1 interacts with beta-1 integrin (VLA4) on leukocytes to mediate adhesion and signal transduction during leukocyte-endothelial cell adhesion. VCAM-1 is likely involved in atherosclerosis and rheumatoid arthritis.

Isotype: Rabbit Ig

Applications: E, IHC, WB

Species Reactivity: H, M, R

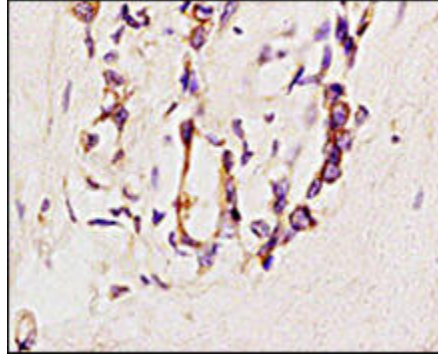
Format: Each vial contains 0.1 mg IgG in 0.1 ml (1 mg/ml) of PBS pH7.4 with 0.09% sodium azide. Antibody was purified by Protein-A affinity chromatography.

Alternate Names: Vascular cell adhesion protein 1; V-CAM1; INCAM-100; CD106 antigen; VCAM1; L1CAM

Accession No.: P19320

Antigen: KLH-conjugated synthetic peptide encompassing a sequence within the C-term region of human VCAM-1.

Application Notes: E: 1:500-1:1,000; WB: 1:200-1:500; IHC: 1:200-1:500



VCAM-1 staining in breast carcinoma. Formalin-fixed paraffin-embedded human breast carcinoma tissue is stained with VCAM-1 Antibody (Cat. No. 250906) used at 1:200 dilution.

Storage: Store at -20°C. Minimize freeze-thaw cycles. Product is guaranteed one year from the date of shipment.

Product Citations: Day R et al. 2013. American Journal of Physiology-Renal Physiology. 304(6):F788-F800. PMID# 23303408.

For research use only, not for diagnostic or therapeutic procedures.